

TrafFix® *Weed Mat*™



Weed Mat Features

- Ideal solution for controlling weeds under Guardrail or Cable Barriers
- Environmentally friendly, Weed Mat is made from 100% recycled car tires
- Reduces or eliminates the use of chemicals or herbicides for weed control
- Flexible, UV stabilized Weed Mat conforms to contours of uneven ground
- Quick and easy to install, no special tools or equipment required



Stop Spraying!

Spraying toxic herbicides or chemicals for weed control is not only expensive and dangerous, it's not good for the environment!

Weed Mat eliminates the need to spray for weed control.



Environmentally Friendly

Weed Mat is made from 100% recycled tires. One 48" x 43" Weed Mat removes 10-12 tires from the land fill. One mile of Weed Mats saves approximately 18,000 - 20,000 tires from going into land fills!

TrafFix
Devices Inc.





Works with Cable Barriers

Weed Mat easily installs under existing cable barriers without the need for special equipment, expensive site preparation, or soil removal. Weed Mat is long lasting and virtually maintenance free.



Works with Guardrails

Weed Mat also works well under existing guardrails keeping the roadside weed free, and reducing maintenance costs.



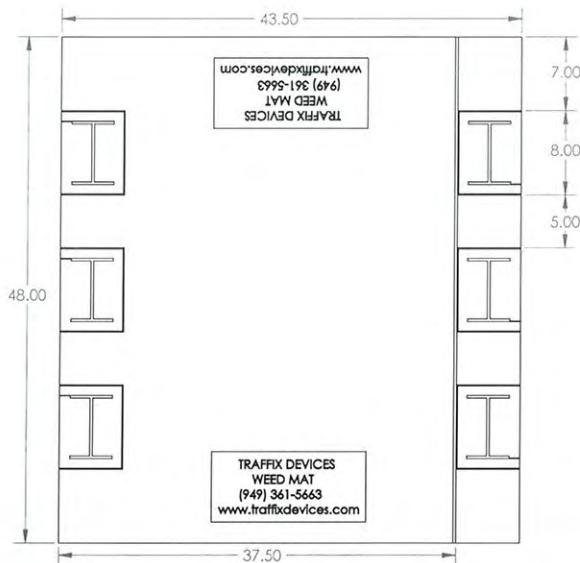
Rubber – Not Concrete or Asphalt

Unlike concrete or asphalt aprons, Weed Mat's flexible design and construction does not inhibit the energy absorbing qualities of the guardrail post and allows guardrail post movement within the soil after an impact.

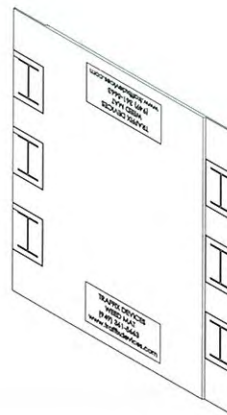


Erosion Control

Weed Mat's heavy duty construction (40 pounds of durable, recycled rubber) not only controls the weeds, but also helps reduce soil erosion and containment of heavy metal contaminated roadside soil.



Product Specifications



Note:

- Preformed cutouts for easy placement around barrier posts
- Weed Mat can also be punched through for new barrier installation



160 Avenida La Pata, San Clemente, CA 92673
 (949) 361-5663 FAX (949) 361-9205
 www.traffixdevices.com

Distributed by: