

**TraFFix
Devices Inc.**

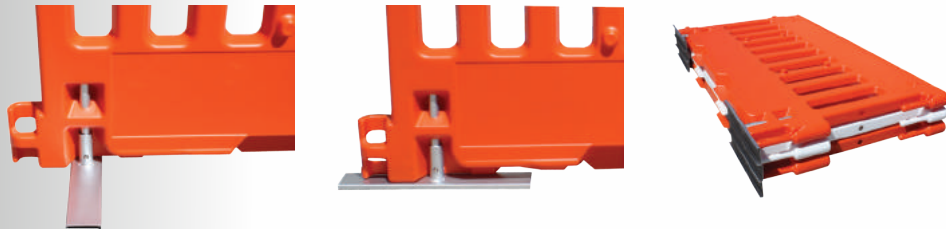


URBANITE™



Ideal for Pedestrian Safety and Crowd Control

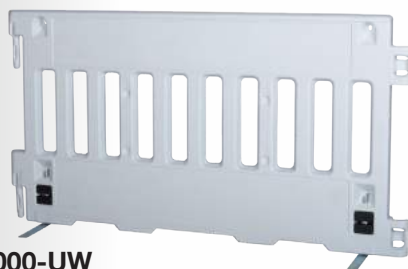
- MASH Tested, Passed, Eligible as Longitudinal Channelizing Device, TL-3.



- Two Steel T-Legs deploy quickly for fast set-up. Leg turns parallel to wall for storage and stacking.
- Made of UV stabilized, high density polyethylene, the linkable Urbanite™ Walls quickly and easily link together in 6 foot sections to allow flexibility in creating a safe pedestrian pathway or a barrier separating spectators from your event.
- Weighing only 23 lbs., the durable double walled, non-flexible, yet lightweight design makes the Urbanite easy to lift on and off the truck and easy to connect.
- The ten molded-in vertical windows reduce wind load, add strength and stability, and reduce overall weight of the Urbanite.
- Two recessed areas measuring 8" wide x 53" long on each side of the Urbanite accommodate sponsorship or advertising of your event.
- Standard colors are orange and white. Custom colors also available upon request.



Blow Molded
Connectors
Provide Strength
and Flexibility.



57000-UW
White Urbanite Pedestrian Wall

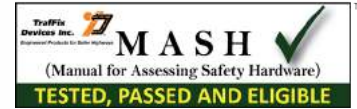


57000-UO
Orange Urbanite Pedestrian Wall



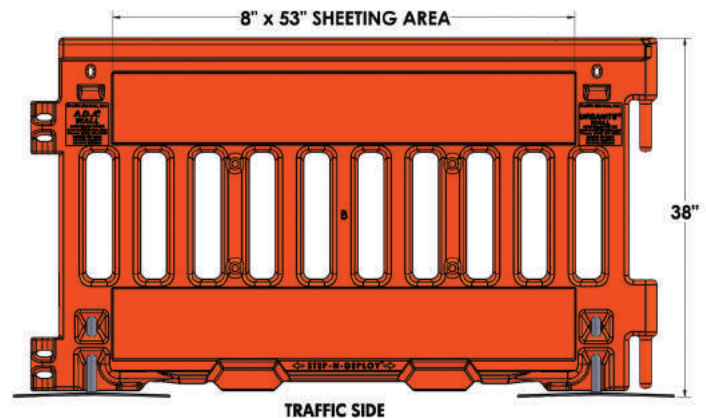
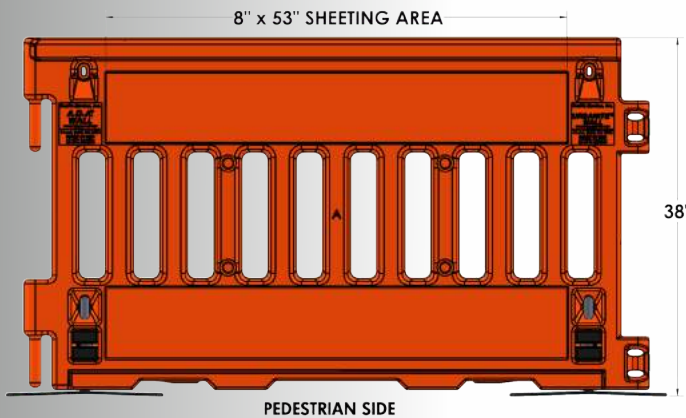
Continuous Ergonomic Handrail Provides a Comfortable and Secure Guide Through the Work Zone

Series 57000-U TraFFix Urbanite Wall™



Specification:

The Urbanite wall shall not exceed 38" in height, will be 72" in length and 3" thick. Total weight will not exceed 23 lbs. The Urbanite wall shall be made of high density UV stabilized polyethylene and is available in standard colors of orange or white. The top surface of the barricade wall will provide a smooth continuous ergonomic hand rail. The male and female linkable connectors will be blow molded to increase strength and flexibility. Each wall will have 10 molded-in vertical windows for improved wind load performance and the two low profile steel Urbanite "T-Legs" swivel for deployment or storage. Both sides of the wall will have two each, 8" x 53" recessed area for reflective sheeting. The bottom of the wall will have openings to allow for water passage. Each wall will have two receiver holes and two shelves to support the attachment of barricade lights. The shelves will minimize the rotation of the barricade lights. Four molded-in stacking lugs will be on one side of the wall and 4 molded-in receiver holes will be on the opposite side of the wall to allow for stacking, transport and storage.



WEIGHT:	23 pounds
HEIGHT:	38 inches
LENGTH:	72 inches
WIDTH:	3 inches
MATERIAL:	UV stabilized polyethylene



Locations for Two Barricade Lights



Urbanite with Brand Logo Sheeting



Four Molded-In Stacking Lugs for Secure Transport and Storage

**TraFFix
Devices Inc.** 

160 Avenida La Pata, San Clemente, CA 92673
 (949) 361-5663 FAX (949) 361-9205
www.traffixdevices.com

Distributed by: